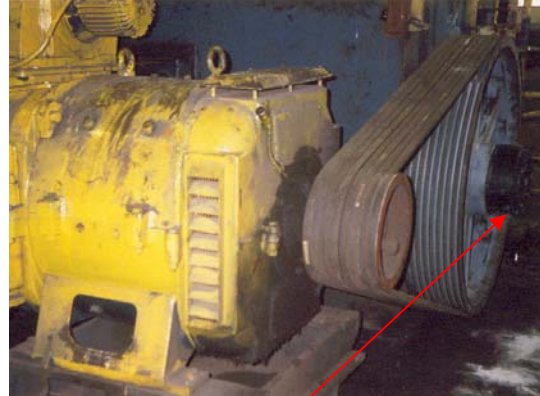




Product: Series 400 Torque Limiter



Application: Leveller – Plate Mill

Function:

The leveler used to straighten plate up to 15mm thick ready for stacking and distribution. The plate is leveled by eleven rollers, each roller is driven from a gearbox with eleven output shafts. Each shaft was originally fitted with a shear pin coupling in order to protect the equipment from overloads. It took approximately one hour to replace a shear pin.

Drive Specification:

Electric motor is connected to a gearbox through a V-belt pulley as shown.

Torque Limiters:

Model 402 RR size 7 fitted directly to the existing V-belt pulley mounted on the input shaft of the gearbox. When the torque limiter trips, it isolates the stored energy of the pulley and avoids shock loads.

Benefits:

The accuracy and repeatability of the Autogard torque limiter ensures that the unit only trips on real overloads. Also using a torque limiter instead of shear pins eliminates fatigue trips. The Downtime is reduced to 30 sec, saving approx. £30K per major overload. No need to call a maintenance engineer to replace the shear pin. Lastly the output of the leveled plates was increased significantly.